



## Trip Report: Mink Creek

**Anadromous Stream #:** 115-34-10220-2011

**Permit:** SF2023-115

**Date:** 7/25/2023

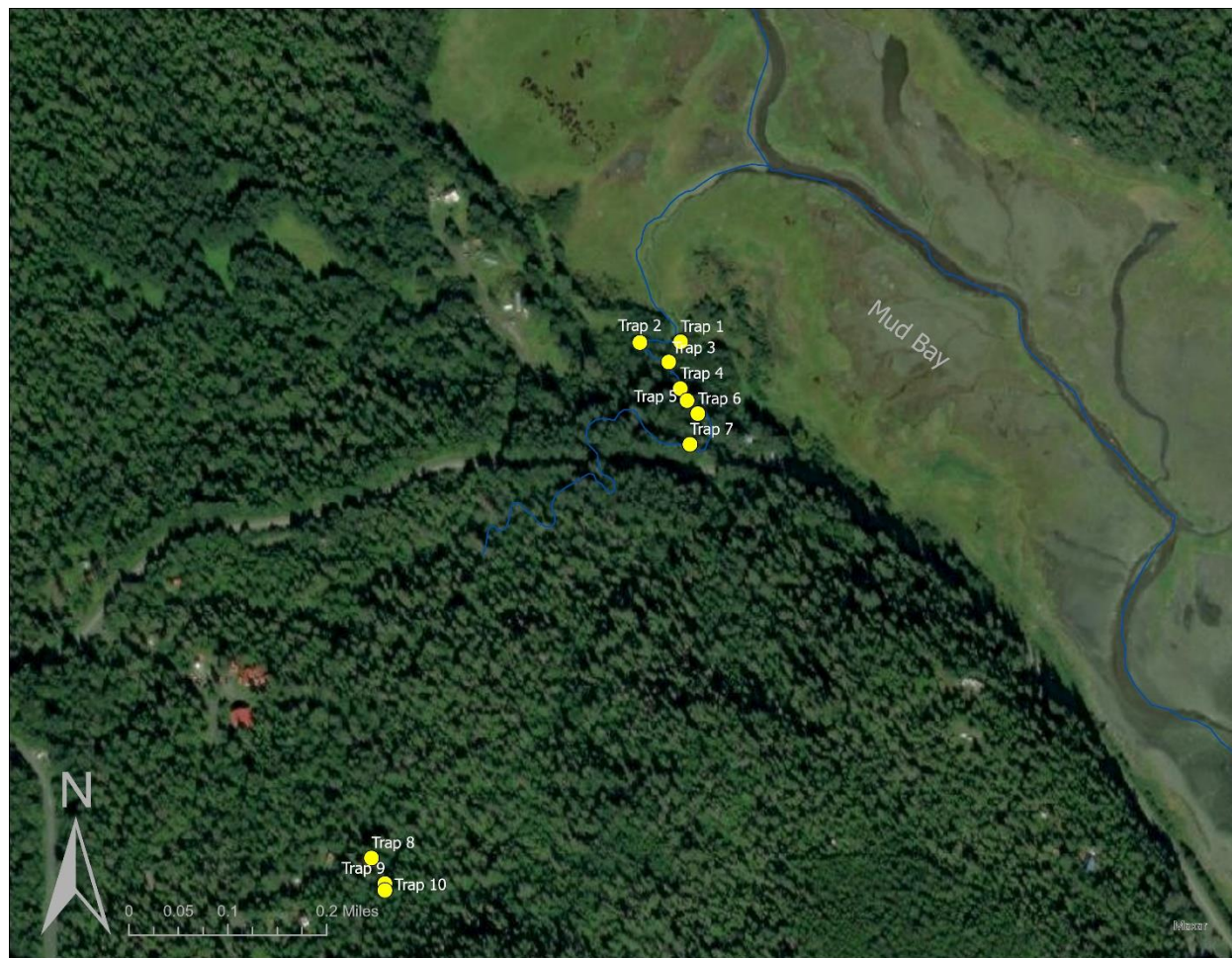
**Technicians:** Stacie Evans, Dan Schultz

**# Minnow Traps:** 10

**Trapping Duration:** 22hrs

**Species and life stage:** CO<sub>r</sub>, CT<sub>r</sub>, DV<sub>r</sub>

**Location:**



| Meridian     | Township | Range   | Section |
|--------------|----------|---------|---------|
| Copper River | 31 South | 60 East | 29      |

| Trap Locations |           |             |          |           |             |
|----------------|-----------|-------------|----------|-----------|-------------|
|                | Latitude  | Longitude   |          | Latitude  | Longitude   |
| Trap #1        | 59.157381 | -135.358671 | Trap #6  | 59.156842 | -135.35842  |
| Trap #2        | 59.157376 | -135.35927  | Trap #7  | 59.156613 | -135.358535 |
| Trap #3        | 59.157228 | -135.358849 | Trap #8  | 59.153515 | -135.363191 |
| Trap #4        | 59.157031 | -135.358678 | Trap #9  | 59.153324 | -135.362995 |
| Trap #5        | 59.156942 | -135.358582 | Trap #10 | 59.153275 | -135.362997 |

| Trap Results |               |                     |          |               |                     |
|--------------|---------------|---------------------|----------|---------------|---------------------|
|              | Species       | Fork Length<br>(mm) |          | Species       | Fork Length<br>(mm) |
| Trap #1      | Coho          | 105                 | Trap #6  | Coho          | 50                  |
| Trap #1      | Cutthroat     | 125                 | Trap #6  | Dolly Varden  | 80                  |
| Trap #1      | Slimy sculpin | 90                  | Trap #7  | Slimy sculpin | 65                  |
| Trap #1      | Slimy sculpin | 80                  | Trap #7  | Coho          | 50                  |
| Trap #1      | Slimy sculpin | 75                  | Trap #7  | Coho          | 90                  |
| Trap #1      | Slimy sculpin | 40                  | Trap #8  | Cutthroat     | 85                  |
| Trap #1      | Slimy sculpin | 40                  | Trap #8  | Cutthroat     | 80                  |
| Trap #2      | Slimy sculpin | 90                  | Trap #8  | Cutthroat     | 95                  |
| Trap #2      | Slimy sculpin | 80                  | Trap #8  | Cutthroat     | 100                 |
| Trap #2      | Coho          | 90                  | Trap #9  | Cutthroat     | 100                 |
| Trap #3      | Cutthroat     | 55                  | Trap #9  | Dolly Varden  | 100                 |
| Trap #3      | Slimy sculpin | 90                  | Trap #10 | Cutthroat     | 85                  |
| Trap #3      | Slimy sculpin | 45                  | Trap #10 | Cutthroat     | 75                  |
| Trap #3      | Cutthroat     | 60                  | Trap #10 | Cutthroat     | 100                 |
| Trap #4      | None          | -                   | Trap #10 | Cutthroat     | 90                  |
| Trap #5      | Cutthroat     | 95                  | Trap #10 | Dolly Varden  | 75                  |
| Trap #5      | Coho          | 75                  | Trap #10 | Dolly Varden  | 70                  |
| Trap #6      | Coho          | 90                  |          |               |                     |



Top Right: Two cutthroat captured in trap #10,  
Top Left: Two coho and one sculpin captured in  
trap #7, Bottom Right: One cutthroat and one  
Dolly Varden captured in trap #9.

**Notes:** A culvert was removed from Mink Creek to improve fish passage on 8/7/2020. Trapping was conducted to monitor efficacy of this restoration project. Traps #1-3 were set downstream of the old culvert site on 7/25/2023. Trap #4 was set under the foot bridge where the culvert used to be, and traps #5-7 were set upstream. Traps #8-10 were set well upstream where the technicians own private property. Coho were captured as far upstream as trap #7 and cutthroat and Dolly Varden were captured in the uppermost trap. A culvert with a 0.5' outfall height at medium streamflow passes under Mud Bay road, downstream of where traps #8, 9, and 10 were set. While this red rated culvert is likely inadequate for fish passage, it is not a full barrier to Dolly Varden and cutthroat trout.

**Recommendations:** Extend upper reach of the Anadromous Waters Catalog to 59.153275, -135.362997 for Dolly Varden and cutthroat trout.